



23 Corfu Pass Port Kennedy WA

4 2 2

Agency 168 is proud to present 23 Corfu Pass Port Kennedy. This spacious four bedroom, two bathroom home is located in the sought after suburb of Port Kennedy is perfect for family's needing that extra space.

Type : House

View : <https://www.agency168.com.au/8454784>

Property features include:

- Spacious open plan kitchen
- Large open plan living / dining area
- Separate lounge room
- Master bedroom with walk-in robe and en-suite
- 3 bedrooms with built in robes
- Main bathroom has separate bath and shower
- Fully enclosed spacious rear yard with paved area, easy to maintain lawns and gardens.

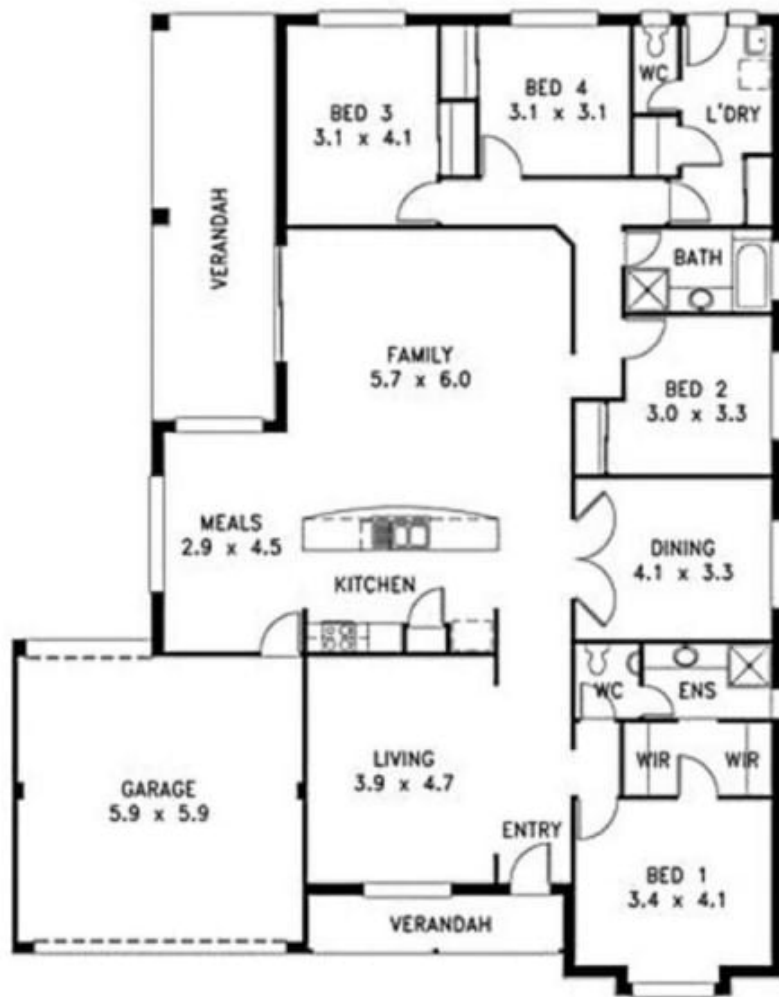


Shirley Lo-Leeson
0433512875

[For full version visit the website](https://www.agency168.com.au)

<https://www.agency168.com.au>

Unit 12A/4 Queen St, Bentley, WA 6102
0429 040 343



UPRN
2616708

